

# Welcome to Sully Primary School - Reception





# Staff in Reception

Teachers – Ms Reynolds and Mrs Heaton

Learning Support Assistants – Mrs Basar,  
Mrs Romans and Mrs Rodwell

# Welcome Packs

Before your child starts Reception we will send out a welcome pack. This will include:

- **Teacher information** - information from the class teacher relating to routines and procedures in Reception
- **Forms** – a range of different forms including data collection, permission forms (for photo use and the use of online learning platforms), information forms etc.
- **School meal debt**- information related to paying for school meals
- **ParentPay**-This is our school communication platform. Please sign up to receive emails

\*Please note that welcome packs will be a lot smaller if your child has already attended our Nursery\*





# The Foundation Phase-what is it?

- Statutory curriculum for 3-7 year olds in Wales from Nursery to Year 2
- Skills based curriculum
- Learning through play – structured/spontaneous activities
- Hands-on, experiential learning
- Focused tasks, continuous/enhanced provision, child-initiated
- Indoor and outdoor learning every day



# How does this look day to day?

- **RWI**- Pupils will be taught phonics in Read, Write Inc groups. These group are appropriate for stage of development and are mixed throughout the Foundation Phase.
- **Group work** – Pupils will work in groups throughout the day on a range of:
  - Focus tasks with an adults
  - Continuous Provision activities
  - Outdoor Learning activities





# Information

- School will **start** at 8.55am and **finish** at 3.20pm (see further information in welcome pack for information about the first two weeks)
- **Drop off and pick-up** points-pupils will be dropped off and picked up from outside of the Reception building
- **Play times**-as the children settle into full time school they will start to have play times on the Foundation Phase playground with other Foundation Phase year groups
- **Lunch times**-pupils will go to the school hall to eat their packed lunch and access school meals
- **Dinner money**-to be paid via ParentPay in advance
- **School uniform**-Navy skirt/dress/trousers/shorts, white polo shirt, navy Jumper (badged jumpers available via A Class Apart)
- **P.E. Kits** – PE kits consist of navy shorts/navy joggers, white t-shirt and navy zip up top. Information about PE days will be given out during the first week of school
- **Home reading** - Pupils will bring books home to read every week. These will start with books that you can read to your child and will progress to books that they can read to you.



- **Homework** - Pupils will be given weekly homework tasks. These will be communicated via a homework book or via Seesaw (the online learning platform used in Reception)
- **Absences/medical appointments**-please phone the school to let us know if your child will not be in school for whatever reason.
- **Medicine** – admin staff are able to administer medication but permission forms must be completed
- **Parent – teacher consultations** – two per year
- **Contact details**-please keep us updated about any changes to contact details.
- **Breakfast club**-please put child's name down with office staff.
- **Start dates and times**-will be included within the welcome pack

\*Please note that many of the above have altered during the 2020-21 academic year to satisfy the WG reopening plans for schools \*

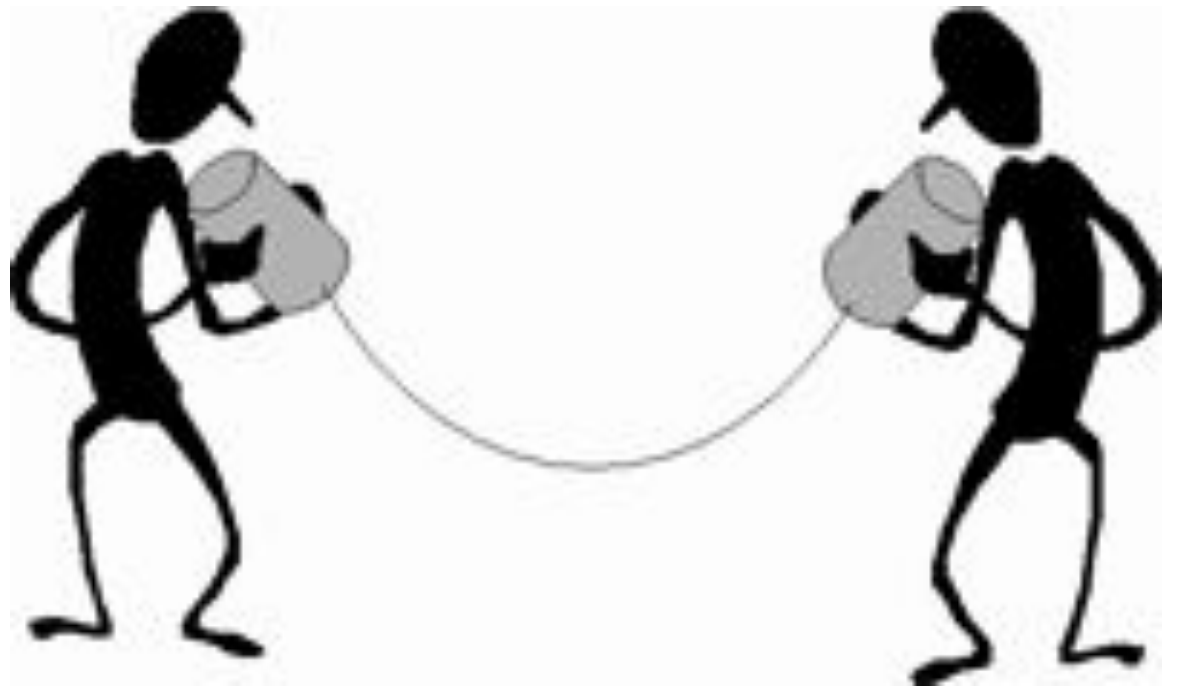
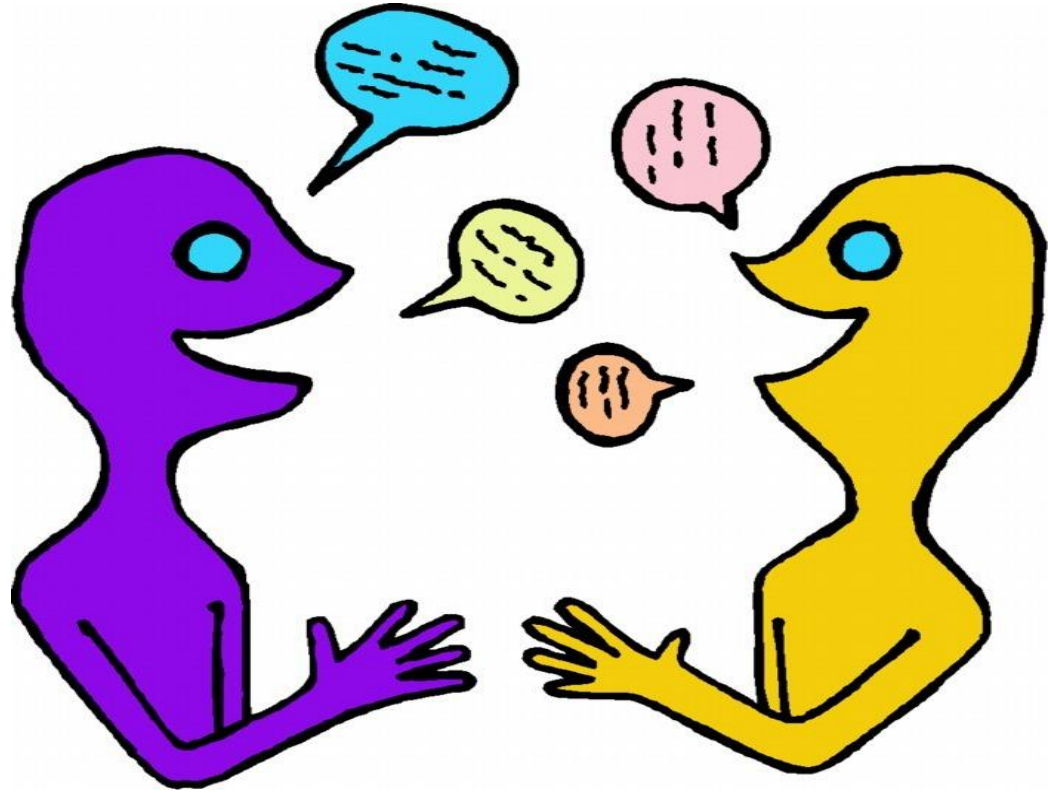


# Involvement in School Life

- PTA
- Volunteering
- Parent Forum







MARTIN

phillipmartin.info